

Green Sticker  
P/N: 89661-10040  
MA - 5450

EP82 AT + MT (both same ecu)  
(89/12 - 92/01)

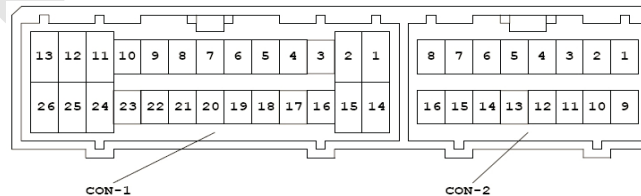
© StreetLegalStarlet  
Document created by Sagittarius®

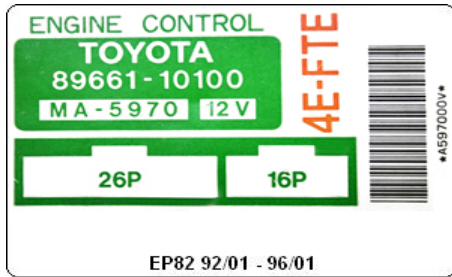
E01	#10	STA	OX	G-	G1	IGF	IGT	THA	PIM	THW	NSW	
E02	#20	E1	KNK	E21	NE	G2	IDL	VC	PSW	E2	VSV1	DISC

T	BC	AC2	ELS	FC	CCO	BATT	+B1
VF	AC1	ACT	SPD		EGW	W	+B

Connector 1		
pin	name	function
1	---	---
2	NSW	Neutral Starter Switch
3	THW	Water temp signal
4	PIM	Pressure Intake Manifold (boost or vacuum)
5	THA	Intake Air temp
6	IGT	Ignition Timing
7	IGF	Ignition Feedback
8	G1	Distributor
9	G-	Distributor Crank Angle
10	OX	Oxygen sensor (lambda)
11	STA	Engine Cranking Signal (starter switch)
12	#10	Injector signal 1+3
13	E01	Computer Ground
14	DISC	Aux. Control Valve or Idle-Up System Vacuum Switching Valve
15	VSV1	Air Control Vacuum Switching Valve (hi-lo boost solenoid)
16	E2	Sensor Ground
17	PSW	Throttle Position Sensor (VTA = PSW)
18	VC	Throttle Position Sensor (pin 1) (also known as VCC)
19	IDL	Throttle Position Sensor (Signals ECU throttle position is at idle)
20	G2	Distributor
21	NE	Part of the IIA (Intergrated Ignition Assembly) (RPM)
22	E21	Sensor Ground
23	KNK	Knock Sensor
24	E1	Computer Ground
25	#20	Injector signal 2+4
26	E02	Computer Ground

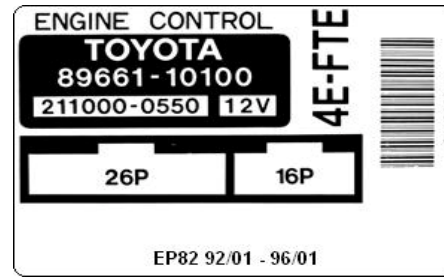
Connector 2		
pin	name	function
1	+B1	Switched Battery Power (12V)
2	BATT	Switched Battery Power (+12V) (EFI Main Relay)
3	CCO	Check Connector Outputs
4	FC	Circuit Opening Relay (Fuel Cut)
5	ELS	Electrical Load Signal System Taillight Relay
6	AC2	12V To Aircon Computer
7	BC	Boost Control
8	T	Check Connector (Same as TE1)
9	+B	Switched Battery Power (12V)
10	W	Warning Light
11	EGW	Catalytic Converter Temperature Warning Light (Combination Meter)
12	---	---
13	SPD	Speed Signal
14	ACT	A/C Cut Control System
15	AC1	A/C Switch Signal System (12V to Aircon Computer)
16	VF	Check Connector Outputs





Green Sticker  
P/N: 89661-10100  
MA - 5970

EP82 MT  
(92/01 - 96/01)



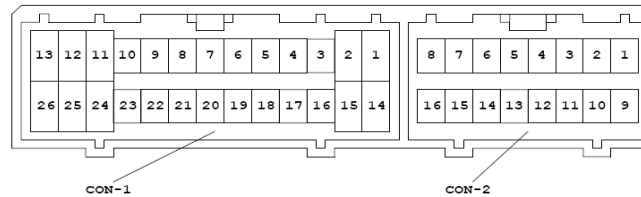
Black Sticker  
P/N: 89661-10100  
MA - 5970

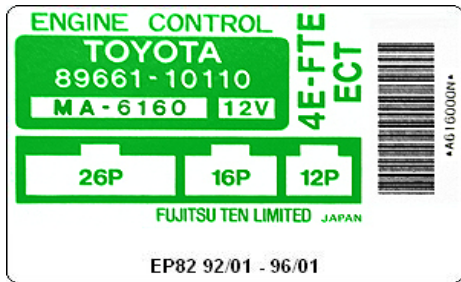
E01	#10	STA	OX	G-	G1	IGF	IGT	THA	PIM	THW	NSW	IPV
E02	#20	E1	KNK	E21	NE	G2	IDL	VC	PSW	E2	VSV1	DISC

TE1	TE2	AC2	ELS	FC	CCO	BATT	+B1
VF	BC	ACT	SPD	AC1	EGW	W	+B

Connector 1		
pin	name	function
1	IPV	Vacuum Switching Valve
2	NSW	Neutral Starter Switch
3	THW	Water temp signal
4	PIM	Pressure Intake Manifold (boost or vacuum)
5	THA	Intake Air temp
6	IGT	Ignition Timing
7	IGF	Ignition Feedback
8	G1	Distributor
9	G-	Distributor Crank Angle
10	OX	Oxygen sensor (lambda)
11	STA	Engine Cranking Signal (starter switch)
12	#10	Injector signal 1+3
13	E01	Computer Ground
14	DISC	Aux. Control Valve or Idle-Up System Vacuum Switching Valve
15	VSV1	Air Control Vacuum Switching Valve (hi-lo boost solenoid)
16	E2	Sensor Ground
17	PSW	Throttle Position Sensor (VTA = PSW)
18	VC	Throttle Position Sensor (pin 1) (also known as VCC)
19	IDL	Throttle Position Sensor (Signals ECU throttle position is at idle)
20	G2	Distributor
21	NE	Part of the IIA (Intergrated Ignition Assembly) (RPM)
22	E21	Sensor Ground
23	KNK	Knock Sensor
24	E1	Computer Ground
25	#20	Injector signal 2+4
26	E02	Computer Ground

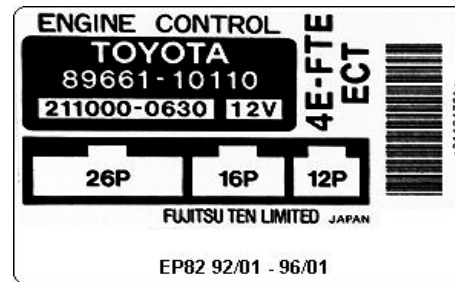
Connector 2		
pin	name	function
1	+B1	Switched Battery Power (12V)
2	BATT	Switched Battery Power (+12V) (EFI Main Relay)
3	CCO	Check Connector Outputs
4	FC	Circuit Opening Relay (Fuel Cut)
5	ELS	Electrical Load Signal System Taillight Relay
6	AC2	12V To Aircon Computer
7	TE2	Check Connector
8	TE1	Check Connector (Same as T on the older ecus)
9	+B	Switched Battery Power (12V)
10	W	Warning Light
11	EGW	Catalytic Converter Temperature Warning Light (Combination Meter)
12	AC1	A/C Switch Signal System (12V to Aircon Computer)
13	SPD	Speed Signal
14	ACT	A/C Cut Control System
15	BC	Boost Control
16	VF	Check Connector Outputs





Green Sticker  
P/N: 89661-10110  
MA - 6160

EP82 A/T  
(92/01 - 96/01)



Black Sticker  
P/N: 89661-10110  
MA - 6160

E02	#10	VSV1	DISC	S2	SL	2	L	G1	NE	IGF	STA	IPV
E01	#20	E1	OD2	IGT	S1	BC	DG	G2	G-	SP2	NSW	

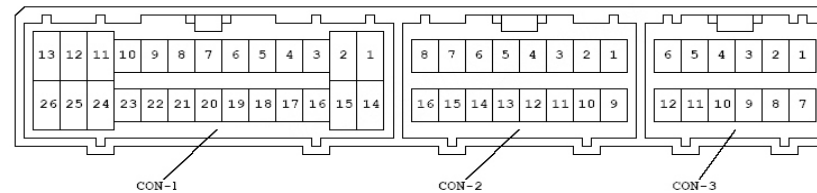
VF	TE2	OX	P	THW	THA	PIM	STP
E21	TE1	KNK	M	IDL	VCC	VTA/PSW	E2

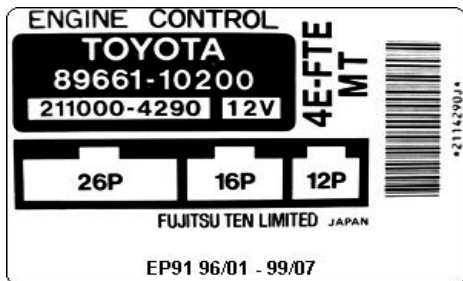
ACT	AC2	FC	CCO	BATT	+B1
ELS	SPD	AC1	EGW	W	+B

Connector 1		
pin	name	function
1	IPV	Vacuum Switching Valve
2	STA	Engine Cranking Signal (starter switch)
3	IGF	Ignition Feedback
4	NE	Part of the IIA (Intergrated Ignition Assembly) (RPM)
5	G1	Distributor
6	L	ECT "L" Selection Signal. Shift Position Switch
7	2	ECT "2" Selection Signal. Shift Position Switch
8	SL	ECT Solenoid
9	S2	ECT Solenoid
10	Disc	Aux. Control Valve or Idle-Up System Vacuum Switching Valve
11	VSV1	Air Control Vacuum Switching Valve (hi-lo boost solenoid)
12	#10	Injector signal 1+3
13	E02	Computer Ground
14	---	---
15	NSW	Neutral Starter Switch
16	SP2	No. 2 Vehicle Speed Sensor ECT in Auto-Transmission
17	G-	Distributor Crank Angle
18	G2	Distributor
19	DG	Check Connector
20	BC	Boost Control
21	S1	ECT Solenoid
22	IGT	Ignition Timing
23	OD2	Cruise Control Computer
24	E1	Computer Ground
25	#20	Injector signal 2+4
26	E01	Computer Ground

Connector 2		
pin	name	function
1	STP	Stop Light Switch
2	PIM	Pressure Intake Manifold (boost or vacuum)
3	THA	Intake Air temp
4	THW	Water temp signal
5	PIM	Pressure Intake Manifold (boost or vacuum)
6	OX	Oxygen sensor (lambda)
7	TE2	Check Connector
8	VF	Check Connector Outputs
9	E2	Sensor Ground
10	VTA/PSW	Throttle Position Sensor (VTA = PSW)
11	VCC	Throttle Position Sensor (pin 1) (also known as VC)
12	IDL	Throttle Position Sensor (Signals ECU throttle position is at idle)
13	M	Shift Position Switch
14	KNK	Knock Sensor
15	TE1	Check Connector (Same as T on the older ecus)
16	E21	Sensor Ground

Connector 3		
pin	name	function
1	+B1	Switched Battery Power (12V)
2	BATT	Switched Battery Power (+12V) (EFI Main Relay)
3	CCO	Check Connector Outputs
4	FC	Circuit Opening Relay (Fuel Cut)
5	AC2	12V To Aircon Computer
6	ACT	A/C Cut Control System
7	+B	Switched Battery Power (12V)
8	W	Warning Light
9	EGW	Catalytic Converter Temperature Warning Light (Combination Meter)
10	AC1	A/C Switch Signal System (12V to Aircon Computer)
11	SPD	Speed Signal
12	ELS	Electrical Load Signal System Taillight Relay





Black Sticker  
P/N: 89661-10200

EP91 M/T  
(96/01 - 99/07)

E02	#10	VSV1	DISC	S2	SL	2	L	G1	NE	IGF	STA	IPV
E01	#20	E1	OD2	IGT	S1	BC	DG	G2	G-	SP2	NSW	

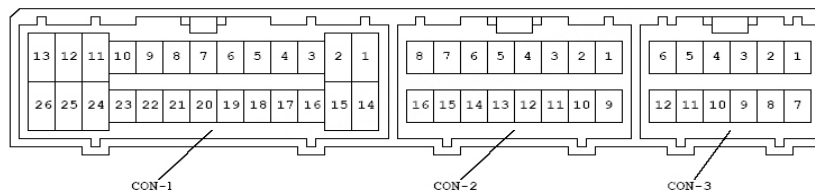
VF	TE2	OX	P	THW	THA	PIM	STP
	TE1	KNK	M	IDL	VCC	VTA/PSW	E2

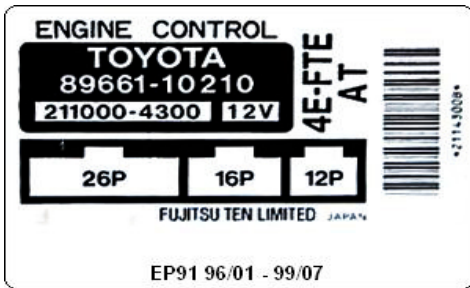
ACT	AC2	FC	CCO	BATT	+B1
ELS	SPD	AC1	EGW	W	+B

Connector 1		
pin	name	function
1	IPV	Vacuum Switching Valve
2	STA	Engine Cranking Signal (starter switch)
3	IGF	Ignition Feedback
4	NE	Part of the IIA (Intergrated Ignition Assembly) (RPM)
5	G1	Distributor
6	L	ECT "L" Selection Signal. Shift Position Switch
7	2	ECT "2" Selection Signal. Shift Position Switch
8	SL	ECT Solenoid
9	S2	ECT Solenoid
10	Disc	Aux. Control Valve or Idle-Up System Vacuum Switching Valve
11	VSV1	Air Control Vacuum Switching Valve (hi-lo boost solenoid)
12	#10	Injector signal 1+3
13	E02	Computer Ground
14	---	---
15	NSW	Neutral Starter Switch
16	SP2	No. 2 Vehicle Speed Sensor ECT in Auto-Transmission
17	G-	Distributor Crank Angle
18	G2	Distributor
19	DG	Check Connector
20	BC	Boost Control
21	S1	ECT Solenoid
22	IGT	Ignition Timing
23	OD2	Cruise Control Computer
24	E1	Computer Ground
25	#20	Injector signal 2+4
26	E01	Computer Ground

Connector 2		
pin	name	function
1	STP	Stop Light Switch
2	PIM	Pressure Intake Manifold (boost or vacuum)
3	THA	Intake Air temp
4	THW	Water temp signal
5	PIM	Pressure Intake Manifold (boost or vacuum)
6	OX	Oxygen sensor (lambda)
7	TE2	Check Connector
8	VF	Check Connector Outputs
9	E2	Sensor Ground
10	VTA/PSW	Throttle Position Sensor (VTA = PSW)
11	VCC	Throttle Position Sensor (pin 1) (also known as VC)
12	IDL	Throttle Position Sensor (Signals ECU throttle position is at idle)
13	M	Shift Position Switch
14	KNK	Knock Sensor
15	TE1	Check Connector (Same as T on the older ecus)
16	---	---

Connector 3		
pin	name	function
1	+B1	Switched Battery Power (12V)
2	BATT	Switched Battery Power (+12V) (EFI Main Relay)
3	CCO	Check Connector Outputs
4	FC	Circuit Opening Relay (Fuel Cut)
5	AC2	12V To Aircon Computer
6	ACT	A/C Cut Control System
7	+B	Switched Battery Power (12V)
8	W	Warning Light
9	EGW	Catalytic Converter Temperature Warning Light (Combination Meter)
10	AC1	A/C Switch Signal System (12V to Aircon Computer)
11	SPD	Speed Signal
12	ELS	Electrical Load Signal System Taillight Relay





Black Sticker  
P/N: 89661-10210

EP91 A/T  
(96/01 - 99/07)

E02	#10	VSV1	DISC	S2	SL	2	L	G1	NE	IGF	STA	IPV
E01	#20	E1	OD2	IGT	S1	BC	DG	G2	G-	SP2	NSW	

VF	TE2	OX	P	THW	THA	PIM	STP
	TE1	KNK	M	IDL	VCC	VTA/PSW	E2

ACT	AC2	FC	CCO	BATT	+B1
ELS	SPD	AC1	EGW	W	+B

Connector 1		
pin	name	function
1	IPV	Vacuum Switching Valve
2	STA	Engine Cranking Signal (starter switch)
3	IGF	Ignition Feedback
4	NE	Part of the IIA (Intergrated Ignition Assembly) (RPM)
5	G1	Distributor
6	L	ECT "L" Selection Signal. Shift Position Switch
7	2	ECT "2" Selection Signal. Shift Position Switch
8	SL	ECT Solenoid
9	S2	ECT Solenoid
10	Disc	Aux. Control Valve or Idle-Up System Vacuum Switching Valve
11	VSV1	Air Control Vacuum Switching Valve (hi-lo boost solenoid)
12	#10	Injector signal 1+3
13	E02	Computer Ground
14	---	---
15	NSW	Neutral Starter Switch
16	SP2	No. 2 Vehicle Speed Sensor ECT in Auto-Transmission
17	G-	Distributor Crank Angle
18	G2	Distributor
19	DG	Check Connector
20	BC	Boost Control
21	S1	ECT Solenoid
22	IGT	Ignition Timing
23	OD2	Cruise Control Computer
24	E1	Computer Ground
25	#20	Injector signal 2+4
26	E01	Computer Ground

Connector 2		
pin	name	function
1	STP	Stop Light Switch
2	PIM	Pressure Intake Manifold (boost or vacuum)
3	THA	Intake Air temp
4	THW	Water temp signal
5	PIM	Pressure Intake Manifold (boost or vacuum)
6	OX	Oxygen sensor (lambda)
7	TE2	Check Connector
8	VF	Check Connector Outputs
9	E2	Sensor Ground
10	VTA/PSW	Throttle Position Sensor (VTA = PSW)
11	VCC	Throttle Position Sensor (pin 1) (also known as VC)
12	IDL	Throttle Position Sensor (Signals ECU throttle position is at idle)
13	M	Shift Position Switch
14	KNK	Knock Sensor
15	TE1	Check Connector (Same as T on the older ecus)
16	---	---

Connector 3		
pin	name	function
1	+B1	Switched Battery Power (12V)
2	BATT	Switched Battery Power (+12V) (EFI Main Relay)
3	CCO	Check Connector Outputs
4	FC	Circuit Opening Relay (Fuel Cut)
5	AC2	12V To Aircon Computer
6	ACT	A/C Cut Control System
7	+B	Switched Battery Power (12V)
8	W	Warning Light
9	EGW	Catalytic Converter Temperature Warning Light (Combination Meter)
10	AC1	A/C Switch Signal System (12V to Aircon Computer)
11	SPD	Speed Signal
12	ELS	Electrical Load Signal System Taillight Relay

